



# VENICE LOCAL COASTAL PROGRAM



# LOCAL COASTAL PROGRAM OVERVIEW

# VENICE

1. Site Context
2. Scope of Project
3. Involvement in Adapt LA
4. Regional Collaboration





# VENICE Site Context

Annexed 1925

2.9 Miles of Sandy Beach

2.4 Square Miles

Population  
~ 40,000  
(2014 estimate)

Density  
12,324 sq/mi

~ 10,000,000  
visitors annually

LA Tourism Convention Bureau

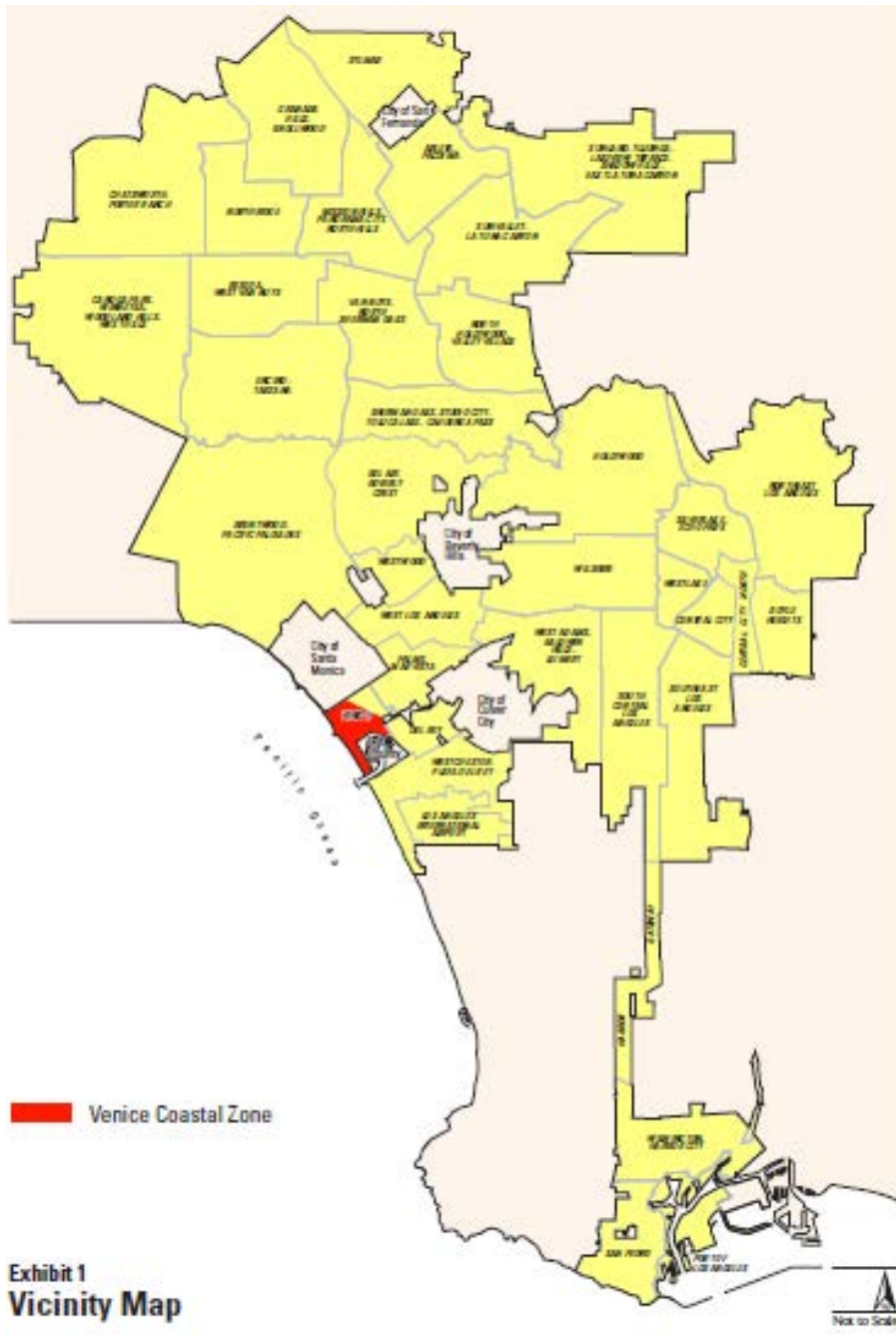
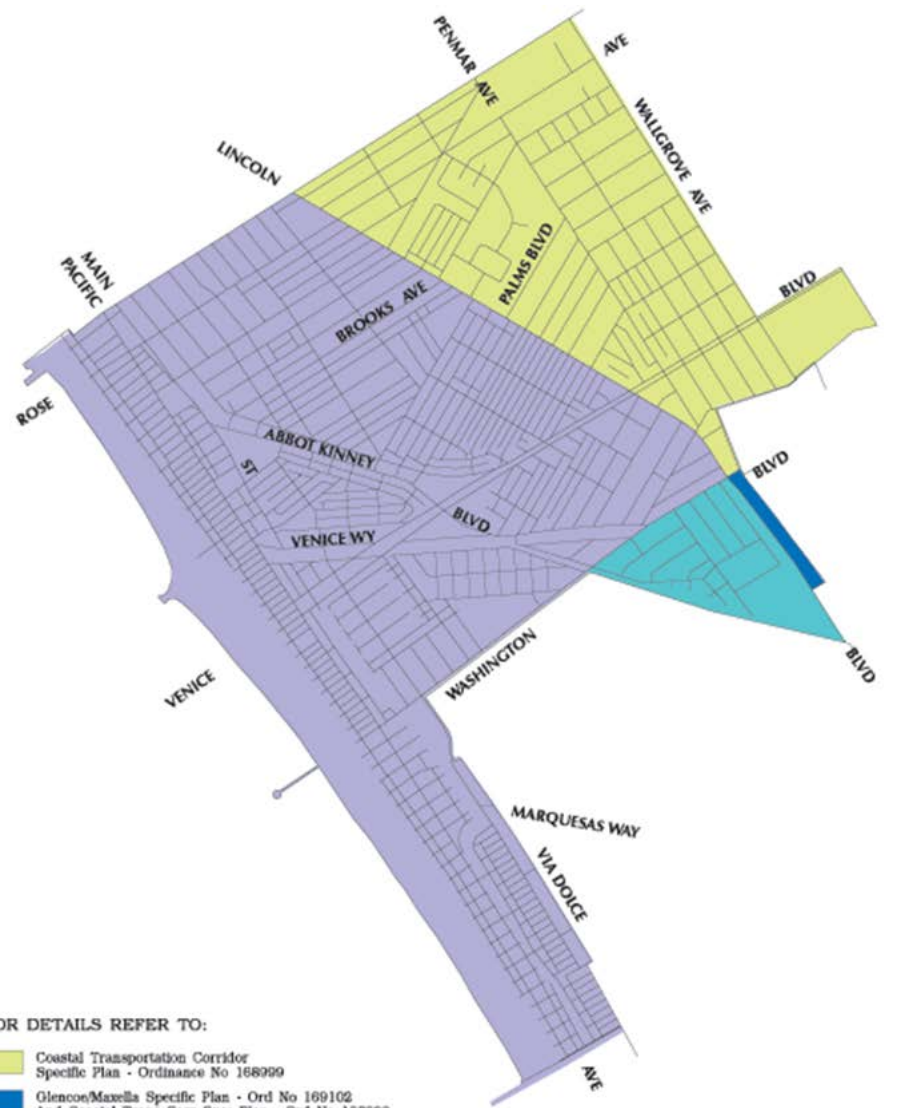


Exhibit 1  
Vicinity Map



- FOR DETAILS REFER TO:
- Coastal Transportation Corridor Specific Plan - Ordinance No 168999
  - Glendon/Maxella Specific Plan - Ord No 169102  
And Coastal Trans Corr Spec Plan - Ord No 168999
  - Venice Coastal Zone Specific Plan - Ord No 172897  
And Coastal Trans Corr Spec Plan - Ord No 168999
  - Venice Coastal Zone Specific Plan - Ord No 172897,  
Oxford Triangle Spec Plan - Ord No 162509  
And Coastal Trans Corr Spec Plan - Ord No 168999

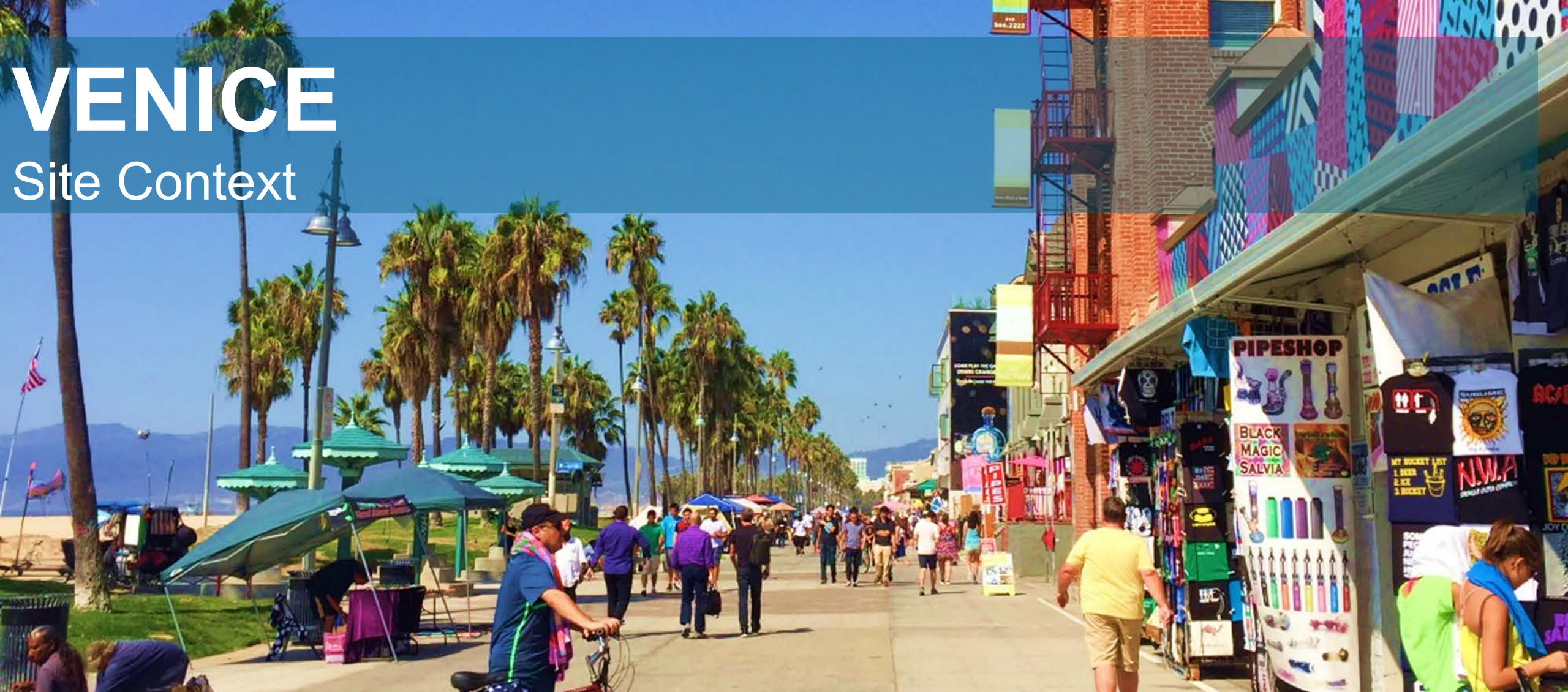
SPECIFIC PLAN AREAS  
VENICE





# VENICE

## Site Context





# VENICE

## LOCAL COASTAL PROGRAM SCOPE of PROJECT



# SCOPE OF PROJECT

## CALIFORNIA COASTAL COMMISSION LCP GRANT PROGRAM



September  
2013

- **CALIFORNIA COASTAL COMMISSION  
LCP Grant Program Launched**

January  
2014

- **PHASE I: \$100,000**

November  
2014

- **PHASE II: \$250,000**





# LCP GRANT - PHASE I

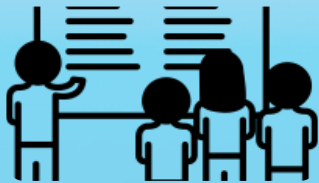


# PHASE I

Budget \$100,000  
June 2014- April 2016



## 1. Issues Assessment



## 2. LCP Framework Study



# PHASE I

## ISSUES ASSESSMENT PROCESS



1. Historical issues  
assessment.  
(LUP 2001)



2. Interviews with  
planning staff.



3. Interviews with  
other City  
departments.





# PHASE I

## LCP FRAMEWORK STUDY OUTLINE



**History of  
coastal  
planning in  
Venice**



**Coastal  
issues  
assessment**



**Preliminary  
hazards and  
coastal  
resources  
assessment**



**Steps  
necessary  
for  
completing  
an LCP**





# LCP GRANT - PHASE II



Los Angeles  
Department  
of City Planning





# PHASE II

Budget \$250,000  
August 2015- April 2017



## 1. Land Use Plan



## 2. Implementation Plan



PUBLIC OUTREACH: Website, survey, workshops

# PHASE II

## Updating the Land Use and Implementation Plans PROCESS

Coastal Hazards Modeling +  
Mapping



Vulnerability Assessment



Adaptation Plan



LUP Policies + Implementation  
Strategies





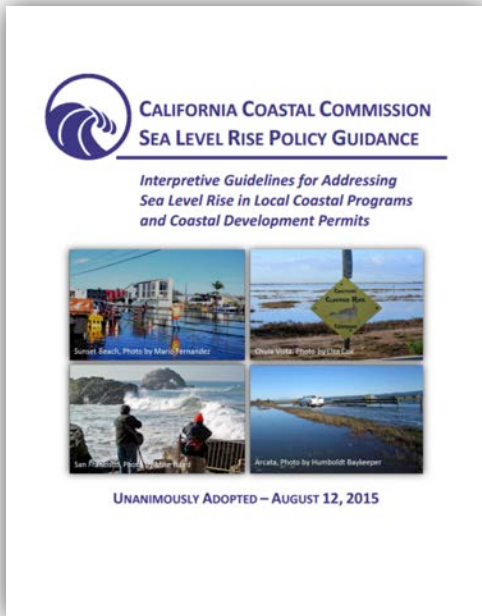
# Involvement in Adapt LA

LOCAL COASTAL PROGRAM

# PHASE II

## LAND USE PLAN

- COASTAL HAZARD MODELING + MAPPING
- VULNERABILITY ASSESSMENT



### 1. BASELINE MAPPING

IDENTIFY SPECIAL FLOOD HAZARD AREAS AND BASE FLOOD ELEVATIONS



### 2. COASTAL STORM SURGE ANALYSIS

CREATE A REPRESENTATIVE SET OF STORM EVENTS THAT CAN BE MODELED



### 3. OVERLAND WAVE MODELING

DETERMINE THE ELEVATIONS TO WHICH WAVE RUNUP EXTENDS DURING A STORM





# Regional Collaboration

LOCAL COASTAL PROGRAM





Thank you!

Contact:  
Laura MacPherson  
[Laura.macpherson@lacity.org](mailto:Laura.macpherson@lacity.org)  
213.978.1187





Los Angeles  
Department  
of City Planning

