

Envisioning Future Impacts through King Tides and Storms



AdaptLA Webinar Series
Webinar #1 | January 12, 2015

Welcome!

- About USC Sea Grant & AdaptLA
- Overview on the California King Tides Project
- King Tides in L.A.
- Announcement of Urban Tides Photo & Video Contest
- Discussion

About USC SG & AdaptLA

Juliette Hart | USC Sea Grant

USC Sea Grant – The Urban Ocean Program



- Fund research
- Community outreach & education
- Technical assistance to local/regional government

If 10 Million by Sea...

- Climate Change Science & Planning
- Coastal Ecosystem Science
- Coastal Management
- Maritime Affairs

Regional AdaptLA



- Grant led by City of Santa Monica, but includes 11 coastal jurisdictions and L.A. County
- Project partners - LARC, Heal the Bay, Santa Monica Bay Restoration Commission
- Funding from - Ocean Protection Council, Coastal Commission and Coastal Conservancy



Regional AdaptLA: Project Scope

- “Best of the best” coastal impact models for L.A. region
 - Coastal Storms Modeling System 3.0 (USGS)
 - Impacts to our Beaches (TerraCosta Consulting Group)
 - Shoreline Change (ESA/Revell Coastal)
- Capacity-Building & Stakeholder Engagement
 - Trainings/Workshops
 - Webinar series
 - Public outreach



AdaptLA: Vulnerability Assessment Training

November 2014



Overview on CA King Tides Project

Marina Psaros | Coravai, LLC

The King Tides Project: Snap the Shore, See the Future

Marina Psaros, Coravai
Twitter: @marinapsaros

In the Beginning...

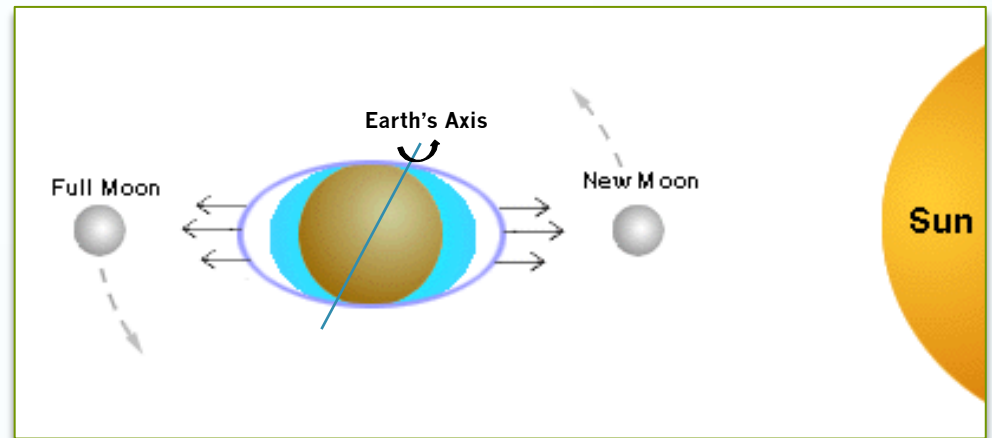
Driving questions:

How do we get everyday people thinking about climate change? How can we communicate sea level rise risk?



What are King Tides?

Happen in summer and winter when the sun and the moon align to exert the greatest gravitational pull on the earth



In California, the annual king tide today = daily high tide in ca. 2050

...a preview of how SLR will impact your community

What is the King Tides Project?

- A global network of local initiatives
- De-politicized public outreach
- Puts photographer at center of their own experience
- Digital storytelling, community mapping, and citizen science



**...a tool to engage everyday citizens
in science and planning**

How the Media Covers the Project



Most extreme tides of the season

SHAFFER GRUBB • U-T



The Boston Globe



U.S. NEWS on NBCNEWS.com

HalfMoonBayPatch

King Tides Threaten to Flood Coastal Homes



grist

A BEACON IN THE SMOG

Los Angeles Times

MercuryNews.com

Beaches Disappear Under King Tides This Week

THE HUFFINGTON POST

CBS NEWS



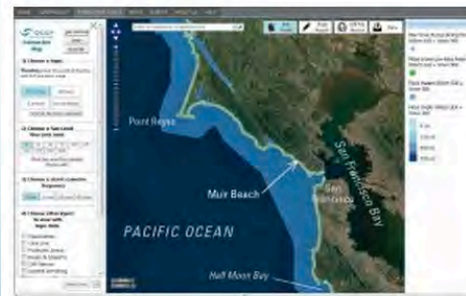
How Scientists Engage With the Project

- “Crowdsourcing” data more quickly and efficiently than they can gather it themselves



- Comparing their models’ predictions of flooding against pictures of reality

Featured Project – [Bay Area Residents Help Scientists Make Sea Level Rise Models Better](#)



In January, we partnered with USGS and the Our Coast, Our Future project to collect king tide photos from specific locations around the Bay Area. The pictures people took are helping scientists better understand which areas are most at risk of flooding and future sea level rise. Researchers are comparing photos of the high tide against computer simulations of flooding to see how well these simulations match reality. This was a fun,

easy way for everyday people to provide important information that will help future sea level rise adaptation planning efforts in the Bay Area. For the original announcement, [click here](#).

How Artists Engage With the Project



EAST BAYSIDE KING TIDE PARTY

Image: Caitlin Fuchalski

CALL FOR PARTICIPATION
Witness, Photograph, Collect Data, Do Interventions!

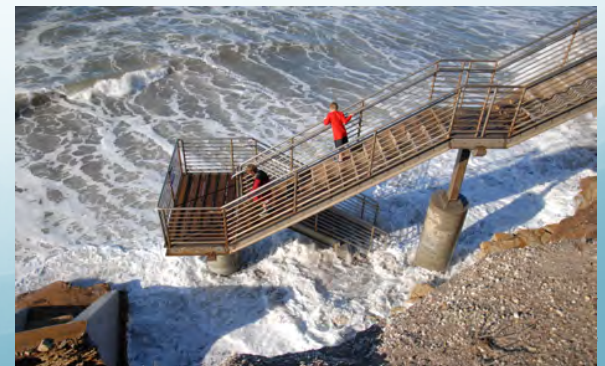
EAST BAYSIDE KING TIDE PARTY
Wednesday, December 4th, 2013
10:30 a.m. - Gather at Zero Station, 222 Anderson Street
11:20 a.m. - 1:00 p.m. Witness King Tide Flood at Cove Street and Marginal Way

This event is being organized by USM faculty and students in cooperation with the East Bayside Neighborhood Organization and Zero Station Gallery.
Make your contact Jan Pirbeck janp@maine.edu or Chris Wright christopherwright@gmail.com

UNIVERSITY OF SOUTHERN MAINE
PORTLAND • BANGOR • OXFORD • BELLEVILLE

How Planners Engage With the Project

- Building a hyperlocal catalogue of at-risk places and people
- Tracking changes over time
- Helping communities understand flood risk and explore adaptation options



How Teachers Engage With the Project

- Using NGSS-compliant curriculum for classroom and field-based learning
- Engaging students in hands-on research that has a direct impact on their communities



Thank you!

Next king tides: Jan 19 – 21, 2015

Visit <http://california.kingtides.net> for media FAQ, tips, and more

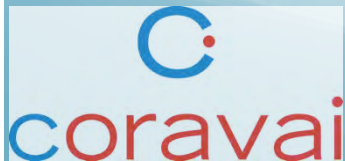
Marina Psaros

King Tides Project Global Director

marina@kingtides.net

415.839.8571

Twitter: @marinapsaros



King Tides in L.A.

Juliette Hart | USC Sea Grant

SLR & King Tides Curriculum

- Curriculum for teachers in partnership w/Coravai
- Resources include:
 - Lesson Plan
 - SLR 101 Presentation
 - Educator Resource Links
 - Maps of vulnerable areas in L.A. that link to management needs

<http://dornsife.usc.edu/uscseagrant/king-tides/>

A graphic for a lesson titled "Lesson: Sea Level Rise and King Tides". It features a circular image of a beach with waves crashing on the shore. A yellow banner with a drop shadow is overlaid on the top left of the circle, containing the text "Lesson: Sea Level Rise and King Tides". To the right of the circle, there is a block of text describing the lesson's purpose.

Lesson: Sea Level Rise and King Tides

The purpose of this lesson is to increase student understanding of sea level rise impacts on our coastline and to increase student contributions to community citizen science efforts on sea level rise education.

King Tides & Planning

- Hyperlocal catalogue of at-risk places and people
- Opportunity to guide yourselves & citizens to areas of concern
- Opportunity to engage skeptical constituents
- Utilize curriculum L.A.-based maps to start the effort...

King Tides & Planning

- Hyperlocal catalogue of at-risk places and people
- Opportunity to guide yourselves & citizens to areas of concern
- Opportunity to engage skeptical constituents
- Utilize curriculum L.A.-based maps to start the effort...
 - Malibu (Broad Beach | Pier, Colony and Lagoon)
 - PCH (Pacific Palisades/Santa Monica)
 - Venice & Marina del Rey
 - Redondo Beach
 - Cabrillo Beach & San Pedro
 - Harbor Area
 - S. Long Beach | N. Seal Beach

Urban Tides Photo & Video Contest

Holly Rindge | USC Sea Grant

Urban Tides Photo & Video Contest

Capture the Future of Our Urban Ocean!

- Contest Dates: January 12 – February 26, 2015
- Regions: Los Angeles and Orange Counties
- 3 Categories to Enter:
 - Individual Photograph
 - Photo Essay (3-6 images)
 - Video (up to 3 minutes)



Urban Tides Are Rising

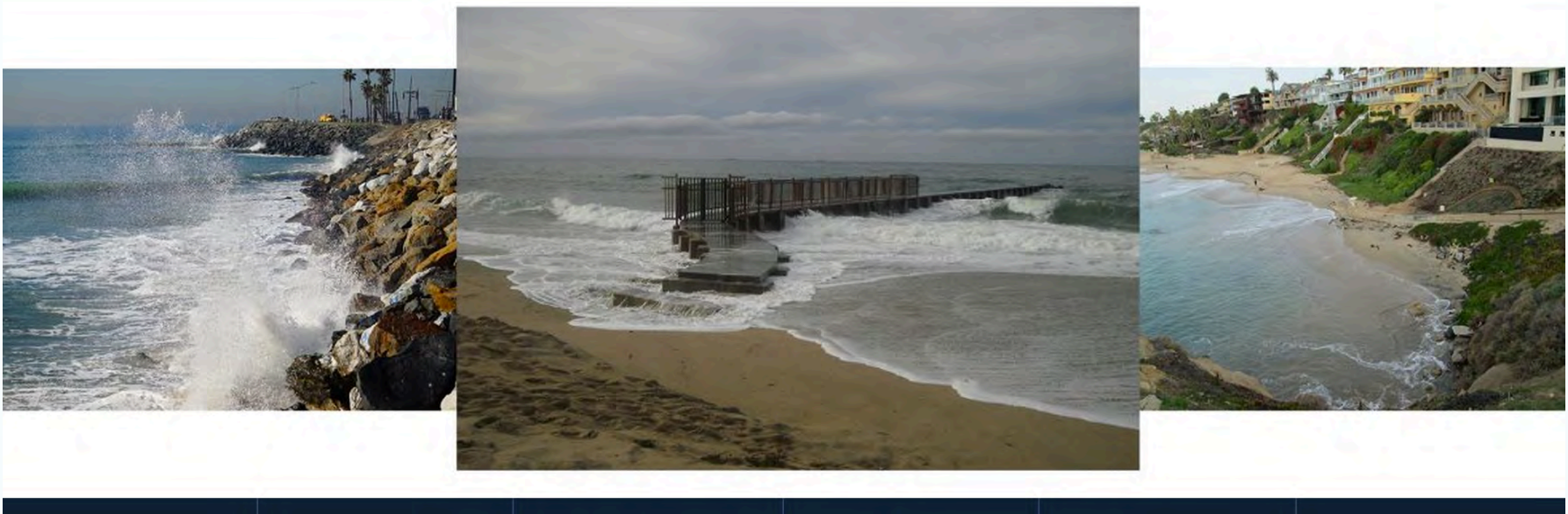
- Great opportunities for images and videos during King Tides on January 19, 20, 21 & February 17, 18, 19.
- Images and videos will be shared broadly with community members and local governments.
 - Digital displays at the Aquarium of the Pacific, Cabrillo Marine Aquarium, and Santa Monica Pier Aquarium
 - Regional AdaptLA workshops and webinars
- Follow the contest on social media!
 - #UrbanTidesPhotos
 - #UrbanTidesVideos





<https://vimeo.com/116300699>

For contest rules and submission guidelines visit:
<http://dornsife.usc.edu/uscseagrant/urban-tides-contest>



Thank you!



Questions?