

Having trouble viewing this email? [Click here to view it online.](#)



USC Dornsife

East Asian Studies Center

November 3, 2025



UPCOMING EVENTS

EASC Guest Speaker Series

Two Hours with Chinese Kunqu Opera: A Cultural Encounter

Friday, November 21 | 10:30AM-12:30PM | DML 240 | **RSVP**

Dr. Wanmeng Li invites the wider community to join us for a performance and guest lecture by **Dr. Fang Wei** and her team from the **Kunqu Opera Society USA!** Dr. Fang and her team of artists are professional performers of Chinese Kunqu and Yue opera, two essential genres that are fundamental to the theatre tradition in East Asia. This special event offers a unique opportunity to learn about this rich artistic heritage in an immersive and interactive way. Dr. Fang and her team will present a live performance of selections from two classic Kunqu pieces, accompanied by an introduction to the tradition. The performance will feature excerpts from *The Peony Pavilion* (牡丹亭), a celebrated romantic tragicomedy written by Tang Xianzu that depicts a love story overcoming the boundary between life and death. The program will also include *Longing for the Secular World* (思凡), a famous solo piece that tells the story of a young nun who, weary of monastic austerity, escapes her convent to pursue worldly life.

This event is co-sponsored by the USC East Asian Library.

Event Reminders

Location Change!

EASC Guest Speaker Series: The Next Wave of Chinese Science Fiction: Toward a Neo-Baroque Literary Universe

Thurs, Nov 6 | 2:00PM - 3:30PM | DML 240



Brian Bernards and **Sunyoung Park** invite Prof. **Mingwei Song** (Wellesley College) to give a lecture on "She-SF," a new generation of Chinese writers who have developed their distinct literary voices. This talk will be moderated by PhD candidate, **Seoyeon Lee**.

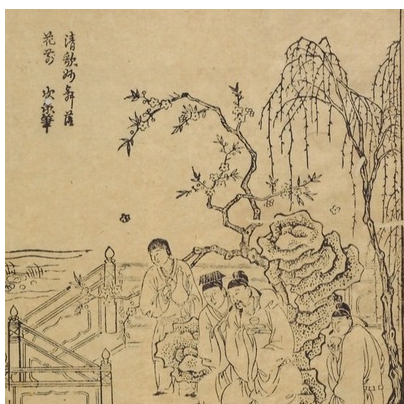
RSVP Closed



EASC Guest Speaker Series: Martial Arts as a Key to Understanding Our Contemporary World
Mon, Nov 10 | 5:30PM-7:00PM | Zoom

Prof. **Jessica Zu** invites the community to a talk with Prof. **Alexus McLeod** (Indiana University) on a key myth discussed in his book *Myth and Identity in the Martial Arts*. He traces the history of this myth from late 19th century Chinese and Japanese conceptions to the beginnings of MMA as sports entertainment.

RSVP



EASC Guest Speaker Series: New Perspectives on Early Modern Chinese Drama

Mon, Nov 17 | 2:00PM-3:20PM | DML 240

Prof. **Mengxiao Wang** invites the community to a talk with Prof. **Yinghui Wu** (UCLA) on her new book, *Playing with Plays: Drama and Early Modern Chinese Media Ecologies*. Yinghui Wu's new book takes us beyond the page-stage dichotomy in drama studies to explore a wide range of cultural experimentation.

RSVP



EASC Grad Connect

Tues, Nov 18 | 4:00PM - 5:30PM | CAS 100

Please join us for the **Fall 2025 EASC Grad Student Connect!** Enjoy food, drink and conversation with fellow students across USC while learning about EASC's academic programming and opportunities. Graduate students from any field are welcome to join, so this is a great opportunity to meet fellow students with East Asia-related research topics and interests!

RSVP

Last Week to Apply!

EASC Global East Asia Maymester 2026

Deadline: Monday, November 10

This is the last week to apply for the **Global East Asia 2026 Maymester!** Global East

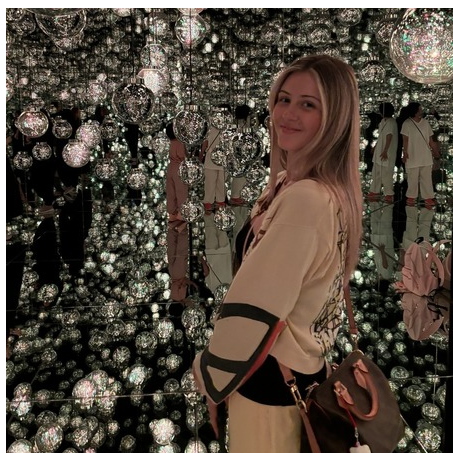
Asia (EASC 360) is a four-week USC Maymester Study Abroad Program, with one week in LA and three in Tokyo, Japan. This intensive program is a research course for USC undergraduate students made possible by EASC and USC Dornsife, with additional support from the [Bruce & Francis Kaji Family Fund](#), the [Wu & Ponrartana Fund](#), and additional donors. Students from all majors, schools and language backgrounds are encouraged to apply for our Global East Asia Tokyo program!



Please see here to start your application & view the updated cost sheet ►

Accepted students will have the opportunity to apply for supplemental funding to cover program costs!

Please contact easc@usc.edu for more details.



Global East Asia Student Feature

Keira Jameson

EASC wants to highlight **Keira Jameson**, a senior majoring in Psychology and a participant in our [2025 Global East Asia Tokyo Maymester](#) program. During her time in Tokyo, Keira researched renowned Japanese fashion designer Yohji Yamamoto. Drawn to the designer's dedication to intricacy and deep connection to Japanese culture, Keira contextualized how traditional Japanese language and tradition were woven into

Yamamoto's garments, which ultimately led to the brand's global success. Highlights included visiting Yohji Yamamoto's flagship stores in Tokyo, where she observed widespread admiration for Yamamoto's work. Despite the endless possibilities for research in such a bustling setting, Keira immersed herself in Tokyo, eventually exploring the Aoyama fashion district. In this district, she became captivated by Yamamoto's values and work and never looked back.

You can read Keira's full feature here ►

Opportunities

Call for Papers - Conference on Traditions of East Asian Typography

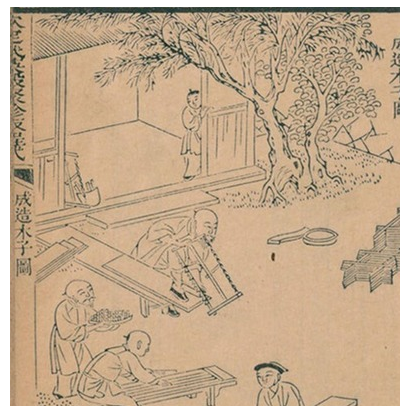
Deadline: Saturday, November 15

The *Conference on Traditions of East Asian Typography* invites proposals exploring

the unique histories of movable type in East Asia prior to the introduction of Western letterpress and lithography in the late 19th century. While woodblock printing dominated the region for centuries, East Asia also developed its own diverse typographic systems—technologies often overlooked or misunderstood in comparison to the Gutenberg tradition.

This conference seeks to reexamine these indigenous typographic practices as distinct, dynamic systems, highlighting their evolution, mutual influences, and cultural significance. Scholars from all disciplines and career stages are encouraged to submit proposals that engage deeply with East Asian contexts before the 20th century; comparative studies across regions or periods are also welcome.

The conference will take place on March 6, 2026, at the USC. [For more information, see here](#) ►



Noriaki Tsuchimoto Research Grant

Deadline: Monday, November 24

The [Council on East Asian Studies](#) at Yale University invites applications for grants to support research utilizing the [Noriaki Tsuchimoto Papers](#) housed in [Manuscripts and Archives in the Yale University Library](#). The collection is currently comprised of 83 boxes containing materials related to the filmmaking and other activities of the Japanese documentary filmmaker Noriaki Tsuchimoto (1928-2008), who is most famous for recording the struggles over the

Minamata mercury poisoning incident and other environmental hazards. The Council will offer up to four (4) grants in FY 2025-2026 to support research utilizing the collection at the level of up to \$1200 for researchers traveling from North America and \$2200 for those coming from outside North America. Holders of a Ph.D. or the equivalent are eligible to apply, as are graduate students who have completed all requirements for the doctorate except the dissertation. [For more information, see here](#) ►

Events Around USC & LA

In the Shadow of Empire: Art in Occupied Japan

Tues, Nov 4 | 5:00PM-6:30PM | Modern Japan History Association | [RSVP](#)

Strategic Synergies: Reinforcing the Japan-US Alliance

Wed, Nov 5 | 12:30PM-1:30PM | Japanese American National Museum | [RSVP](#)

Gajin Fujita on Rising Sun, Falling Rain: Japanese Woodblock Prints

Wed, Nov 5 | 6:00PM | Hammer Museum

More Money Instead of Democracy: Managerial Despotism, Inflationary Cycles, and an Alternative Pre-history of 1989

Thurs, Nov 6 | 1:00PM-2:30PM | UCLA Center for Chinese Studies

Navigating Interpersonal Relationships in Chinese Social Interactions: What Can We Offer as a Pragmatician?

Thurs, Nov 6 | 3:30PM-5:00PM | UCLA Center for Chinese Studie | [RSVP](#)

Direction of Korean Language Education in North America: Connectivity between K-16 Korean Language Education

Sat, Nov 8 | 10:30AM-4:30PM | UCLA Center for Korean Studies | [RSVP](#)

Spice, Magic & Mystique

Sat, Nov 8 | 8:00PM-9:00PM | Suara Southeast Asian Choir | [RSVP](#)

The Burmese Way to Socialist Realism: Comparing Burmese Remakes of Hollywood Movies from the Parliamentary Democracy and Socialist Periods

Mon, Nov 10 | 12:30PM-2:00PM | UCLA Asia Pacific Center | [RSVP](#)

Tracing Invisible Power and Technocratic Governance in Qing Archives

Mon, Nov 10 | 4:00PM-5:30PM | UCLA Center for Chinese Studies



East Asian Studies Center | 3454 Trousdale Parkway CAS 100 | Los Angeles, CA 90089-0154

USCDornsife

Dana and David Dornsife
College of Letters, Arts and Sciences

University of Southern California Dornsife College of Letters, Arts and Sciences | Los Angeles, CA 90089
US

This email was sent to eastasianstudiescenter@gmail.com. To ensure that you continue receiving our emails, please add us to your address book or safe list.

manage your preferences
opt out if you no longer want to receive USC Dornsife E-Communications
Got this as a forward? **Sign up** to receive our future emails.