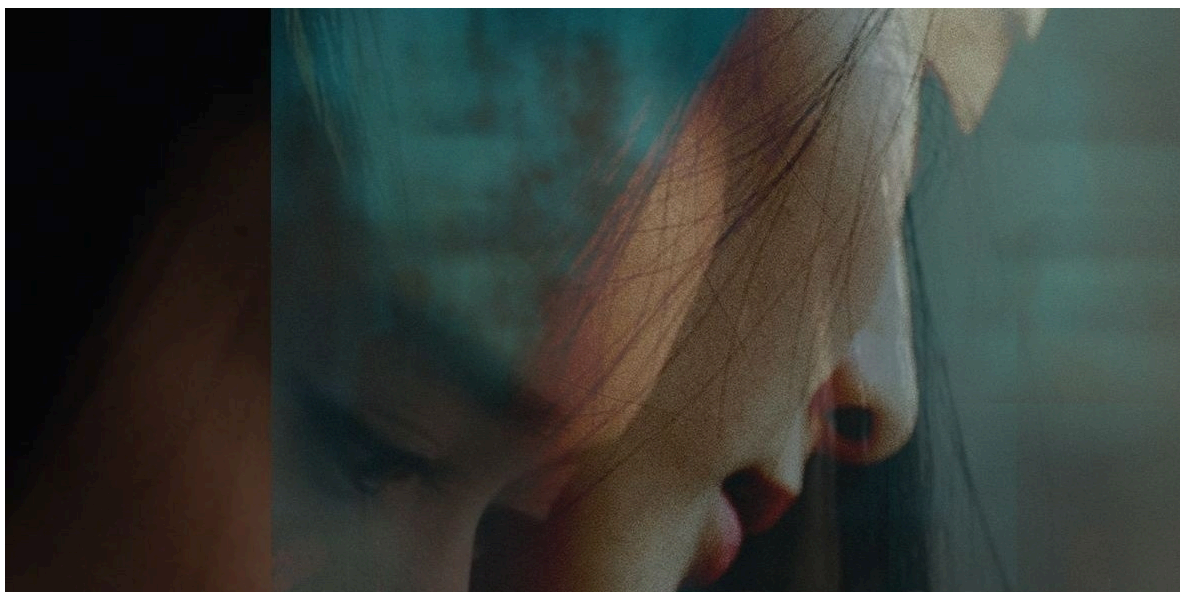




# USC Dornsife

## *East Asian Studies Center*

November 17, 2025



### Upcoming Event

#### EASC Guest Speaker Series

#### Possibilities and Predicaments: Rethinking Asian American Filmmaking in the Age of AI - Talk by Yeon Jin Lee

**Tuesday, December 2 | 2:00PM-3:20PM | THH 201 | [RSVP](#)**

Prof. **Raymond Tsang** invites the wider community to talk by Director **Yeon Jin Lee**, a Korean American graduate of USC's School of Cinematic Arts, whose journey from NASA to Hollywood offers a unique lens on AI and creativity. This lecture examines these tensions as a form of double consciousness, where creativity and identity are continuously negotiated against the backdrop of technological transformation in a transnational context. Director Lee's migration from Korea to Indonesia and eventually to the United States, and whose professional journey from Silicon Valley and NASA to Hollywood, provides a powerful lens for understanding the possibilities and predicaments of Asian American filmmaking in the age of AI. She will present her short films and share the struggles and insights that have shaped her filmmaking career.

### Event Reminders

#### **Happening Today!**

#### EASC Guest Speaker Series: New Perspectives on Early Modern Chinese Drama

**Mon, Nov 17 | 2:00PM-3:20PM | DML 240**

Prof. **Mengxiao Wang** invites the community to a talk with Prof. **Yinghui**



**Wu (UCLA)** on her new book, *Playing with Plays: Drama and Early Modern Chinese Media Ecologies*. Yinghui Wu's new book takes us beyond the page-stage dichotomy in drama studies to explore a wide range of cultural experimentation.

*RSVP closed*



### **Happening This Week!**

#### **EASC Grad Connect**

**Tues, Nov 18 | 4:00PM - 5:30PM | CAS 100**

Please join us for the **Fall 2025 EASC Grad Student Connect!** Enjoy food, drink and conversation with fellow students across USC while learning about EASC's academic programming and opportunities. Graduate students from any field are welcome to join!

*RSVP closed*



#### **EASC Guest Speaker Series: Two Hours with Chinese Kunqu Opera**

**Fri, Nov 21 | 10:30AM-12:30PM | DML 240**

Dr. **Wanmeng Li** invites the wider community to join us for a performance and guest lecture by Dr. **Fang Wei** and her team from the Kunqu Opera Society USA! Dr. Fang and her team will present a live performance of selections from two classic Kunqu pieces, accompanied by an introduction to the tradition.

**RSVP**

## **Opportunities**

### **2026-27 KCJS Postdoctoral Fellowships**

**Deadline: December 15**

The **Kyoto Consortium for Japanese Studies** is searching for up to two **KCJS Postdoctoral Fellows** for the academic year 2026-27, with the possibility of extension. Based at **Doshisha University** in Kyoto, KCJS is an undergraduate study abroad program governed by a consortium of thirteen American universities and administered by the Center for Undergraduate Global Engagement at Columbia University. Candidates should hold a Ph.D. in a Japan-related field by the start of the fellowship. It is preferred that the candidate has relevant undergraduate teaching experience, previous experience living or studying in Japan, and Japanese language and cultural fluency. The term of appointment is from August 1, 2026 to May 31, 2027, with the possibility of an extension to May 31, 2028, pending mutual agreement and the approval of the relevant committees. Candidates must have the Ph.D. defended by July 1, 2026 and no earlier than July 1, 2022.



**Learn more here ►**

## Events Around USC & LA

### Family, Disability and Lived Experience in Lee Chang-dong's OASIS

Wed, Nov 19 | 2:00PM-3:30PM | UCI Center for Critical Korean Studies

### Open Talk: Journey through the Ancient Imperial Capitals of Japan with Waka Poetry

Thurs, Nov 20 | 2:00PM-3:00PM | Yanai Initiative

### Protean Assemblages: The Literary Invention of Han Taiwanese Settlerhood in the Postwar Pacific

Thurs, Nov 20 | 2:00PM-3:30PM | UCLA Center for Chinese Studies

### The Origin of the 1960s Korean Developmental Regime: Manchurian Modern

Thurs, Nov 20 | 4:00PM-5:30PM | UCI Center for Critical Korean Studies

### Echoing the Age of the Gods: The Reception of Dōtaku Bronze Bells in Medieval and Early Modern Japan

Fri, Nov 21 | 3:00PM-4:30PM | Yanai Initiative

### Threads of Identity: Telling Filipinx American Stories through Fashion

Sat, Nov 22 | 6:00PM-9:00PM | Visions and Voices | [RSVP](#)



---

East Asian Studies Center | 3454 Trousdale Parkway CAS 100 | Los Angeles, CA 90089-0154

## USC Dornsife

Dana and David Dornsife  
College of Letters, Arts and Sciences

University of Southern California Dornsife College of Letters, Arts and Sciences | Los Angeles, CA 90089  
US

This email was sent to eastasianstudiescenter@gmail.com. To ensure that you continue receiving our emails, please add us to your address book or safe list.

**manage** your preferences  
**opt out** if you no longer want to receive USC Dornsife E-Communications  
Got this as a forward? **Sign up** to receive our future emails.