

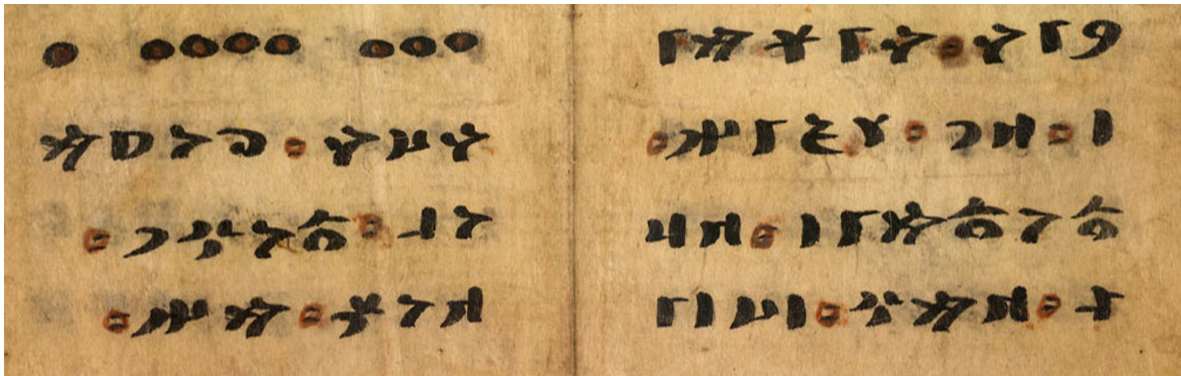
Having trouble viewing this email? [Click here to view it online.](#)



USC Dornsife

East Asian Studies Center

February 18, 2025



UPCOMING EVENTS

10th Workshop on Turkic and Languages in Contact with Turkic (Tu+10)

Saturday-Sunday, March 1-2 | 8:30AM-7:30PM | SGM 101 | [RSVP](#)

Tu+ is a student-organised workshop dedicated to linguistic research on Turkic languages, such as Kazakh, Uyghur, Turkish, and Bashkir, as well as languages historically or geographically in contact with them, including Mongolian, Armenian, and Kurdish. Bringing together graduate students and faculty from institutions worldwide, the workshop welcomes research from all subfields of linguistics—such as syntax, semantics, phonetics, and historical linguistics—as long as the focus is on a Turkic language or its linguistic interactions. Tu+ provides a collaborative space for scholars to engage with diverse linguistic perspectives across Asia. The organizing committee of Tu+10 consists of **Metehan Oguz**, **Esra Erdem** and Prof. **Travis Major**.

Guest Scholars

Serpil Karabüklü (University of Chicago)

Deniz Özyıldız (Universität Konstanz)

Tu+10 is co-sponsored by the [East Asian Studies Center](#) and [Jean-Roger Vergnaud Memorial Research Fund](#).



Spring 2025 EASC Undergraduate Mixer

Friday, March 7 | 2:00PM-3:30PM | CAS 100 | [RSVP](#)

Please join us for the **Spring 2025 EASC Undergraduate Mixer**! Come meet other East Asian area studies and Korean studies majors and minors while enjoying some food and drinks. We would love for you to bring fellow students who are also interested in East Asia, research and study abroad opportunities!

This event is open to USC undergraduates only.

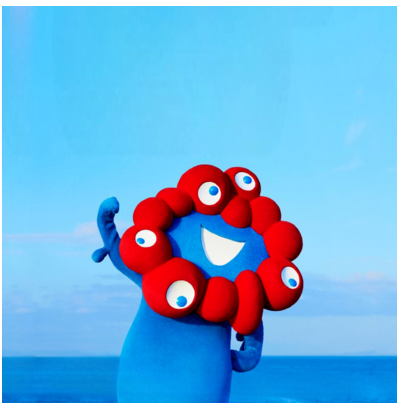
Please **RSVP** by Friday, February 28, so we can order enough snacks and drinks for everyone!

Event Reminders



Materialisms & Infrastructures of the Transpacific: A Roundtable Conversation **Tues, Feb 18 | 4:00PM-5:30PM | KAP 445**

The **Transpacific Research Cluster** invites the community for a roundtable conversation on the emerging trends within the field of Transpacific Studies, focusing particularly on the theoretical interventions that push understandings of infrastructural development and materialist methodologies across Asia and the Pacific.



MYAKU-MYAKU Meet and Greet

Tues, Feb 25 | 1:00PM-1:50PM | CAS 100

EASC invites you to meet **MYAKU-MYAKU**, the official mascot of the upcoming Expo 2025 that will be held in Osaka, Japan this year! The event will include a short presentation on Expo 2025, a Q&A session, and photo opportunities. Refreshments will be provided!

[RSVP](#)

Flower Bird Wind Moon Staged Reading

Sat, Mar 1 | 2:00PM-5:00PM | Scene Dock Theatre

On the first day of Women's History Month, the Shinso Ito Center and **Velina Hasu Houston** present a reading of *Flower Bird Wind Moon*, a play that explores female empowerment and immigrant integrity. The reading, directed by **Tamara**



Ruppert, will be followed by a panel consisting of the director, playwright, and dramaturge and moderated by **Julia Cho**.

RSVP

Opportunities

Visiting Assistant Professor in Japanese History

Deadline: Friday, February 21

Williams College's Department of History invites applications for a two-year Visiting Assistant Professorship in Japanese history, beginning July 1, 2025. Scholars of any period or topic in Japanese history are welcome, with preference for those who can also teach Korean history. Candidates must hold a Ph.D. by September 2025 and will teach two courses per semester with autonomy in curriculum development. Application materials, including a letter of interest, CV, three recommendation letters, and a writing sample, should be submitted via Interfolio by February 21, 2025. [Learn more](#) ►



Events Around USC & LA

The Growing Chinese Economic Presence in Chile: Opinions of the Chilean Elite
Tues, Feb 18 | 12:15PM-1:30PM | UCLA Center for Chinese Studies | [RSVP](#)

Global Civil Society and China: Challenges and Prospects
Tues, Feb 18 | 5:00PM-6:00PM | UCLA Asia Pacific Center | [RSVP](#)

Exploring Taiwan with Miss Chizuru: The Fictional Craft of Taiwan Travelogue
Wed, Feb 19 | 9:30AM-10:45AM | UCLA Center for Chinese Studies | [RSVP](#)

Peking Opera Past and Present: A Conversation with Shi Yihong (史依弘)
Wed, Feb 19 | 3:00PM-5:00PM | UCLA Center for Chinese Studies

Heroes & Legends: Celebrate our Community Hero Dr. Monica Ryoo
Wed, Feb 19 | 5:00PM-7:00PM | Korean Studies Institute | [RSVP](#)

Edo-Period Kabuki Play Types: Genre and the Performing Arts
Fri, Feb 21 | 3:00PM-5:00PM | Yanai Initiative

Bereishit Dance Company: Balance & Imbalance / Judo

Sun, Feb 23 | 6:00PM | Visions and Voices | [RSVP](#)

Colloquium with Federico Marcon

Mon, Feb 24 | 1:00PM | UCLA Terasaki Center for Japanese Studies

Support EASC!



East Asian Studies Center | 3454 Trousdale Parkway CAS 100 | Los Angeles, CA 90089-0154

USC Dornsife

Dana and David Dornsife
College of Letters, Arts and Sciences

University of Southern California Dornsife College of Letters, Arts and Sciences | Los Angeles, CA 90089
US

This email was sent to dyu60281@usc.edu. To ensure that you continue receiving our emails,
please add us to your address book or safe list.

manage your preferences

opt out if you no longer want to receive USC Dornsife E-Communications
Got this as a forward? **Sign up** to receive our future emails.