

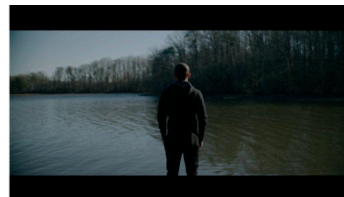
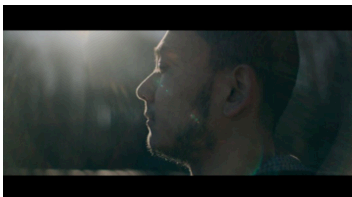
Having trouble viewing this email? [Click here to view it online.](#)



USC Dornsife

East Asian Studies Center

November 4, 2024



Upcoming Events

EASC Guest Speaker Series:

Waiting for the End: Film Screening and Q&A

**Wednesday, November 13 | 2:00PM-4:00PM | Michelle and Kevin Douglas
IMAX Theatre | [RSVP](#)**

Please join us for a talk with Film screening and post-screening Q&A with director **Memetjan Semet**, **Gheyret Uyghur** (lead actor), **Lara Barry** (supporting actress), and Faculty Moderator **Prof. Jenny Chio** (EALC/ANTH 324: Contemporary China: Cultural Politics and Social Realities).

Film Synopsis

Shirzat, a young Uyghur graduate living in exile, one day learns his father has disappeared in China's mass detentions. His life unravels—financial struggles, failed relationships, and immigration issues weigh him down. When news of his father's long prison sentence reaches him, Shirzat faces an agonizing choice: speak up and risk his remaining family's safety, or remain silent and betray his conscience. This film exposes the personal toll of genocide and the impossible choices faced by those living in exile.

[See the trailer here](#) ►

Director Biography

Memetjan Semet is a director and screenwriter known for his compelling storytelling and deep connection to his Uyghur heritage. He has directed numerous short films, many of which have been nominated or awarded best picture domestically and internationally. His work often explores themes of exile, identity, and resistance, reflecting the struggles of the Uyghur people.

This event is co-sponsored by the [USC School of Cinematic Arts](#).



EASC Guest Speaker Series: Cthulhu Cultivation: Corporate Horror, Proletarian Manifesto, and the Salvation of Insanity in Chinese Fantasy Novels

Thursday, November 21 | 4:00PM-5:30PM | Zoom | [RSVP](#)

Dr. Kun Huang invites the wider community to a talk with **Prof. Zhange Ni** (Virginia Tech) on the Cthulhu Mythos and Chinese fantasy novels. The Cthulhu Mythos is fictional universe positing the existence of Cthulhu and other monstrous deities and warning against attempts to venture into a cosmos indifferent, if not hostile, to human interests. These monsters have arrived in China and transfigured there. The Cthulhu conquest of China is also the Chinese conquest of Cthulhu. The anti-humanism of supernatural horror has been transformed into a humanist critique against the capitalist system that utilizes information sciences and digital technologies to exploit human capacities. Prof. Ni will use Chinese fantasy novels to explore themes of corporate horror, proletarian manifesto, and the salvation of insanity. For a full abstract of the talk, [see here](#) ▶

EVENT REMINDERS



EASC Guest Speaker Series: Spectres of Progress Across China's Northeastern Borders

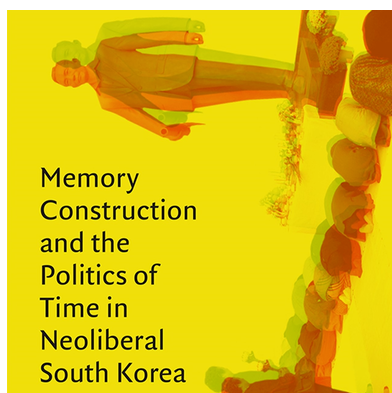
Fri, Nov 8 | 3:30PM-5:00PM | SOS 250

Please join us for a talk with **Dr. Ed Pulford** (University of Manchester) and Faculty Moderator **Prof. Joshua Goldstein**.

The image shows an old 1960s-80s neighbourhood in Yanji, China that is soon to be torn down with the much newer

prefectural government HQ in the background

[RSVP](#)



EASC Guest Speaker Series: Democracy and the Discourse of De-democratization in Post-1987 South Korea

Wed, Nov 13 | 12:00PM-1:20PM | DML 240

Please join us for a talk with **Dr. Namhee Lee** (University of Manchester) and Faculty Moderator **Prof. Sunyoung Park** on the social movements and political horizons of Korea after the 1997

financial crisis.

RSVP

Due Today!

EASC Global East Asia 2025

Deadline: Monday, November 4

This is the final day to finish up your application for the Global East Asia Maymester! Global East Asia is a four-week USC Maymester Study Abroad Program with one week in LA and three in Tokyo. Students from all majors, schools and language backgrounds are encouraged to apply for our Tokyo program:



EASC 360: Tokyo - Japanese Society and Design Thinking

Taught by Prof. Miya Desjardins, Art History and EALC

Learn more about the program components, the application process and funding opportunities through our **informational video!**

OPPORTUNITIES



EASC LSSI Research Assistantship

Deadline: Friday, November 8

EASC welcomes applications for a Research Assistant (RA) to support its **Landscape and Sustainability Studies Initiative**. The RA will serve as a resource for the initiative as well as a liaison between EASC and its partners at the **Center for East Asian Garden Studies** (CEAGS) at The Huntington. The RA will also serve as the primary point person for developing and coordinating events related to this initiative, as well as assisting in editorial work for a special issue of the *Review of Japanese Culture and Society* journal. The successful applicant is expected to begin in **Spring 2025** and will work 5-10 hours per week throughout the semester. The hourly rate will be **\$25-30/hr depending on experience**. The position can be renewed each semester. **See application here**



Global East Asia Tokyo Graduate Assistant

Deadline: Friday, November 15

EASC is searching for a graduate student to serve as an assistant for the Tokyo portion of our **EASC 360: Global East Asia TOKYO Maymester Program**. Global East Asia TOKYO is a 4-week Maymester program led by Prof. Miya Desjardins with 1 week in Los Angeles and 3 weeks in Tokyo. The Tokyo portion dates are **May 23 - June 14, 2025**. Candidates should be fluent in Japanese, have experience living or working in Japan, be



organized and able to manage students, have a good rapport with students, be able to provide translation support for students for their research projects, serve as point person for logistics arrangements with travel agents, etc.

Benefits (while abroad):

- Travel costs (economy airfare and ground transportation)
- Lodging with students (for the duration of the program only paid directly by the program)
- Meals w/ actual receipts (some group meals will be paid directly by the program)
- Program-related events/excursions/entry fees (paid directly by the program)
- \$3000 travel award stipend

Please submit a cover letter, CV and names/email addresses of two references in the **application portal** ►

Events around USC & LA

Problematic Analogies: Diplomatic Exchange and the Discourse of Legitimacy in Early Medieval China

Tues, Nov 5 | 10:00AM-11:30AM | UCLA Center for Chinese Studies

Cold War Baby: Historical Context Meets Aesthetics

Wed, Nov 6 | 6:00PM-8:00PM | GYOPO x UCI School of the Arts | **RSVP**

Developing Interactional Competence through Authentic Conversations: Pedagogical Approaches and Effects

Thurs, Nov 7 | 4:00PM-5:30PM | UCLA Center for Chinese Studies

Screening: All About Lily Chou-Chou

Thurs, Nov 7 | 7:30PM | UCLA Cinema

Recovering Yosano Akiko's Prose Fiction: Female Consciousness and Identity in Five Short Stories from her Anthology Kumo no Iroiro (1912)

Fri, Nov 8 | 4:00PM-5:30PM | Yanai Initiative

Screening: Tekkonkinkreet

Fri, Nov 8 | 7:30PM | UCLA Cinema

Growing and Knowing in the Gardens of China: A Symposium

Sat, Nov 9 | 9:00AM-5:00PM | The Huntington | **RSVP**

Guidance by Dokkaebi Fire and Other Works

Mon, Nov 11 | 8:00PM | REDCAT | **RSVP**

Support EASC



Comments? Questions? Promotion requests?
easc@dornsife.usc.edu

For more news and information about the USC East Asian Studies Center visit usc.edu/easc

USCDornsife
Dana and David Dornsife
College of Letters, Arts and Sciences

University of Southern California Dornsife College of Letters, Arts and Sciences | Los Angeles, CA 90089
US

This email was sent to dyu60281@usc.edu. To ensure that you continue receiving our emails,
please add us to your address book or safe list.

manage your preferences
opt out if you no longer want to receive USC Dornsife E-Communications
Got this as a forward? **Sign up** to receive our future emails.