

Testing Self-Administration of the Consumer Expenditure Diary Survey in a Probability-Based Online Panel

Nikki L. Graf, Graham Jones, and Tucker Miller
U.S. Bureau of Labor Statistics



CIPHER Conference
February 27, 2025

This presentation provides a summary of research results. The information is being released for statistical purposes, to inform interested parties, and to encourage discussion of work in progress. The presentation does not represent an existing, or a forthcoming new, official BLS statistical data product or production series.



Outline

- Background – Consumer Expenditure (CE) Diary Survey
- Online Panel Self-Administered Diary (OPSAD) test design
- Data quality analysis – Comparison between OPSAD and CE Online Diary
- Summary and next steps



Consumer Expenditure (CE) Diary Survey

- Collects small frequent expenses using two consecutive one-week diaries
- Respondent enters expenditure data into a paper or online diary form
- Respondent reports on expenditures made by all household members
- Expenditures grouped into four categories:
 - ▶ Food and Drinks For Home Consumption
 - ▶ Meals, Snacks, and Drinks Away from Home
 - ▶ Clothing, Shoes, Jewelry, and Accessories
 - ▶ All Other Products, Services, and Expenses



Online Panel Self-Administered Diary (OPSAD) Test Design

- Conducted on the Ipsos KnowledgePanel[®], a probability-based web panel designed to be representative of the U.S.
- Field period: November 2021 – January 2022
- Independent samples drawn for each of the 3 months
- Total starting sample: 12,700 adults representing their households
- Stages:
 - ▶ Initial Household Characteristics Survey (developed based on CE CAPI instrument)
 - ▶ Two-week Consumer Spending Diary
- Incentives:
 - ▶ \$2 cash equivalent for completing Household Characteristics Survey
 - ▶ \$50 cash equivalent for qualifying as a complete for the Spending Diary



Diary Instructional Resources for Respondents

	CE Online Diary	OPSAD
Interviewer to guide respondents on survey concepts, encourage diary keeping, review diaries, and capture missed expenses	✓	✗
<i>In the online diary instrument:</i>		
User Guide pdf	✓	✓
Instructions, FAQs, Definitions, Examples	✓	✓
Video tutorial links	✓	✓
<i>Help Desk (via phone/email):</i>		
Diary access and navigation issues	✓	✓
Survey concepts (e.g., where to report items, level of detail)	✗	✓
<i>Email communications:</i>		
Invitation/Welcome email	✓*	✓
3 reminder emails and a closing email	✗	✓

*if respondent provided email address



Data Quality – Comparison between OPSAD & CE Online Diary



CE Online Diary and OPSAD Comparisons

- Focus on comparisons between CE Online Diary and OPSAD to control for mode effects
 - ▶ Past CE research has found meaningful differences between Paper and Online Diary users
- Data from November 2021 – January 2022
- Diaries with no reported expenditures are excluded
- CE Online Diary: 668 diaries (348 households)
- OPSAD: 5,854 diaries (3,153 households)
- Results shown here are unweighted

Item Nonresponse

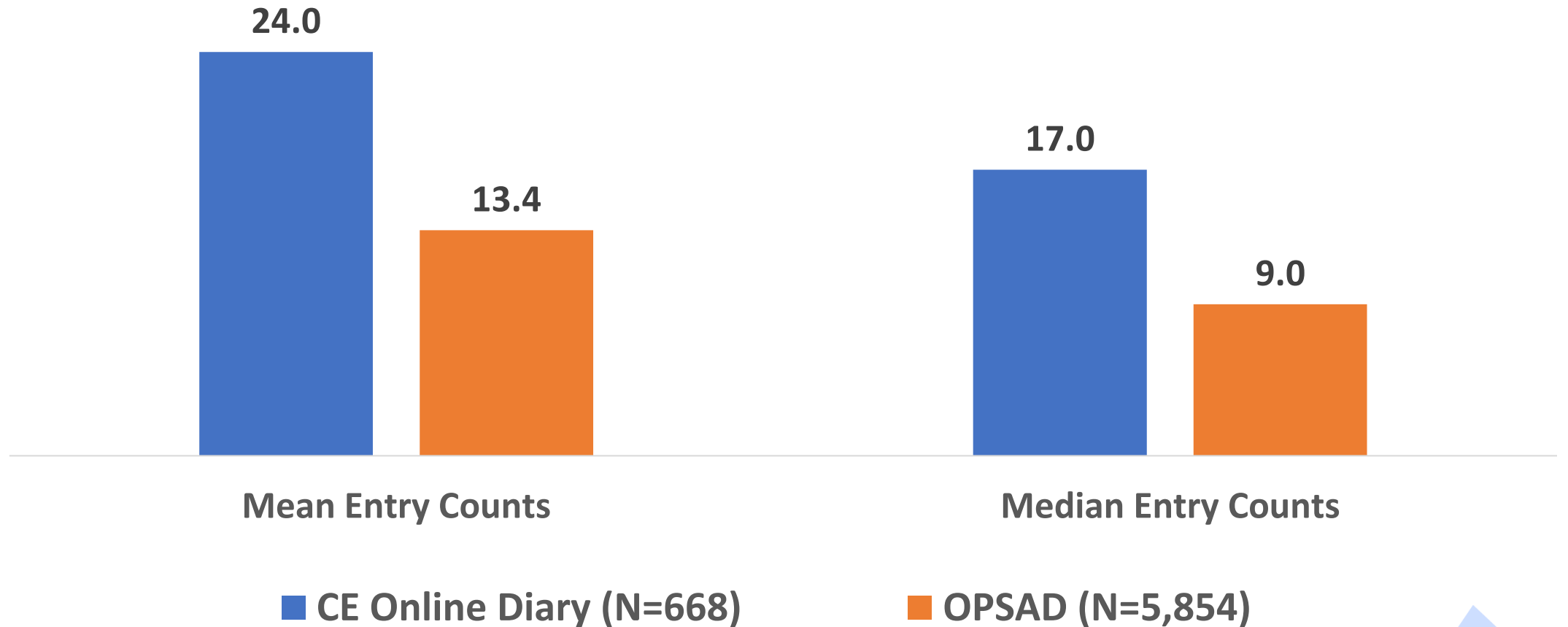
- For each item, respondents were required to provide:
 - ▶ Date of purchase
 - ▶ Business where item was purchased
 - ▶ Expense category (e.g., ‘Food and Drinks for Home Consumption’)
- But other fields could be left blank:
 - ▶ Cost
 - ▶ Item Description

% of Diary Entries with...	CE Online Diary	OPSAD
Cost field blank	0.3%	1.0%
Item description blank*	0.3%	1.4%
Invalid text in item description field* (e.g., DK/don't know)	0.0%	0.3%
Invalid text in business name field (e.g., DK/don't know)	1.1%	2.6%

**Excludes Meals Away from Home category*

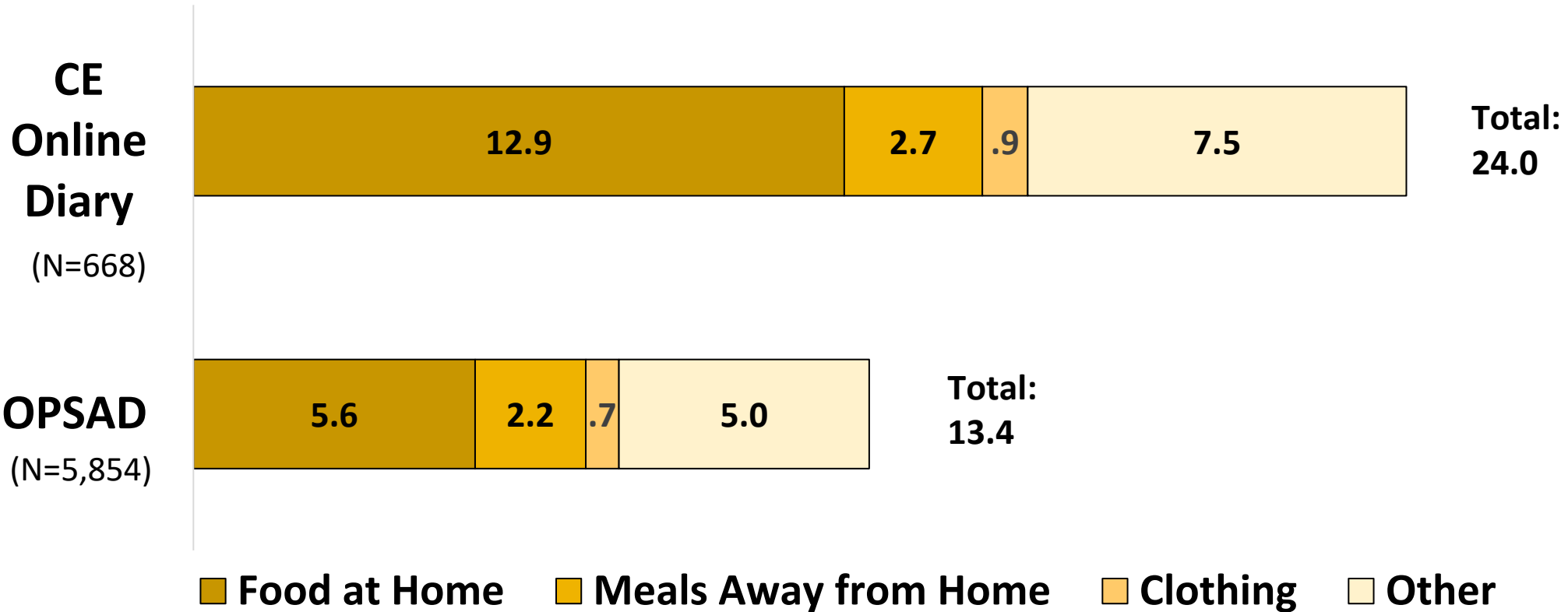
Expenditure Entry Counts

(among diaries with at least one entry)

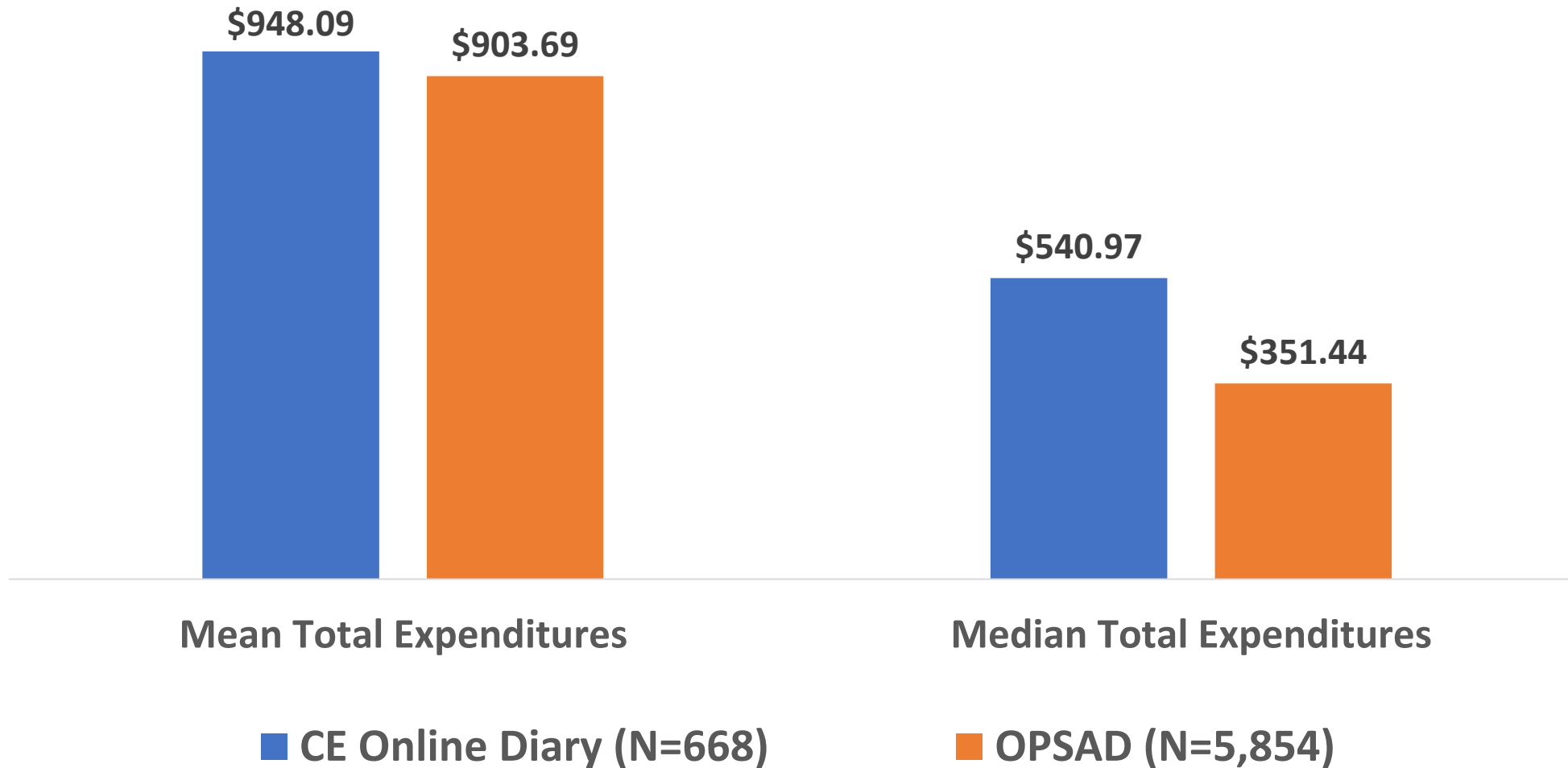


Counts by Section

Average number of weekly diary entries, by expense category:

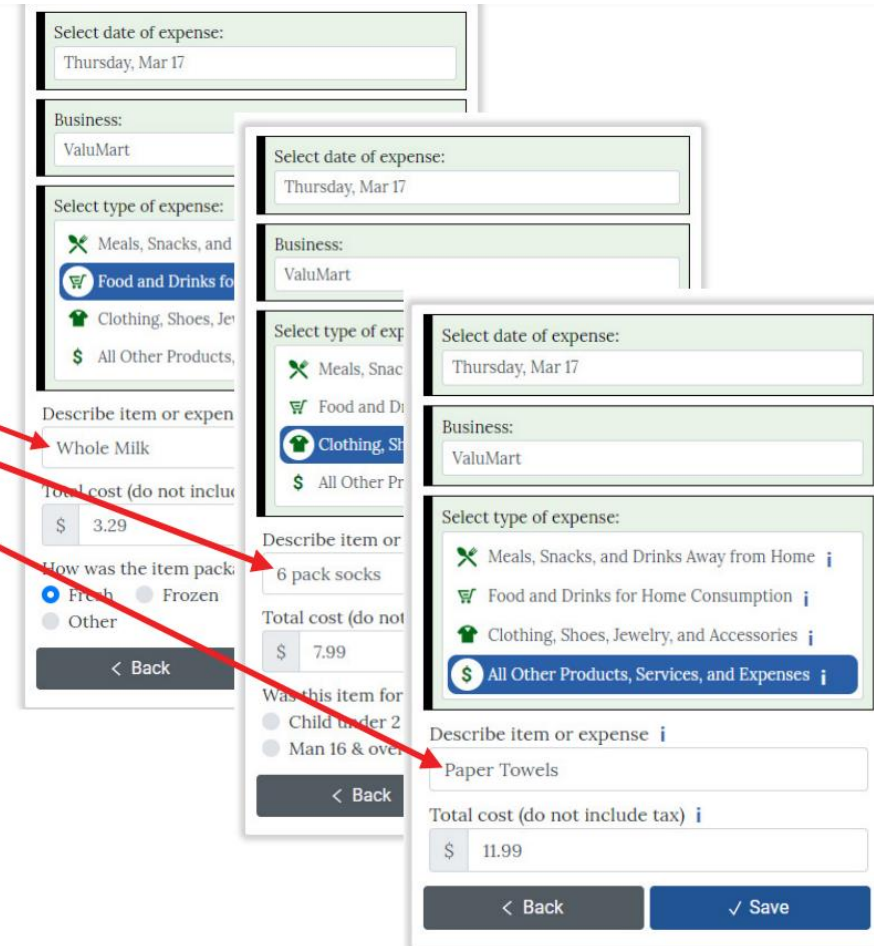
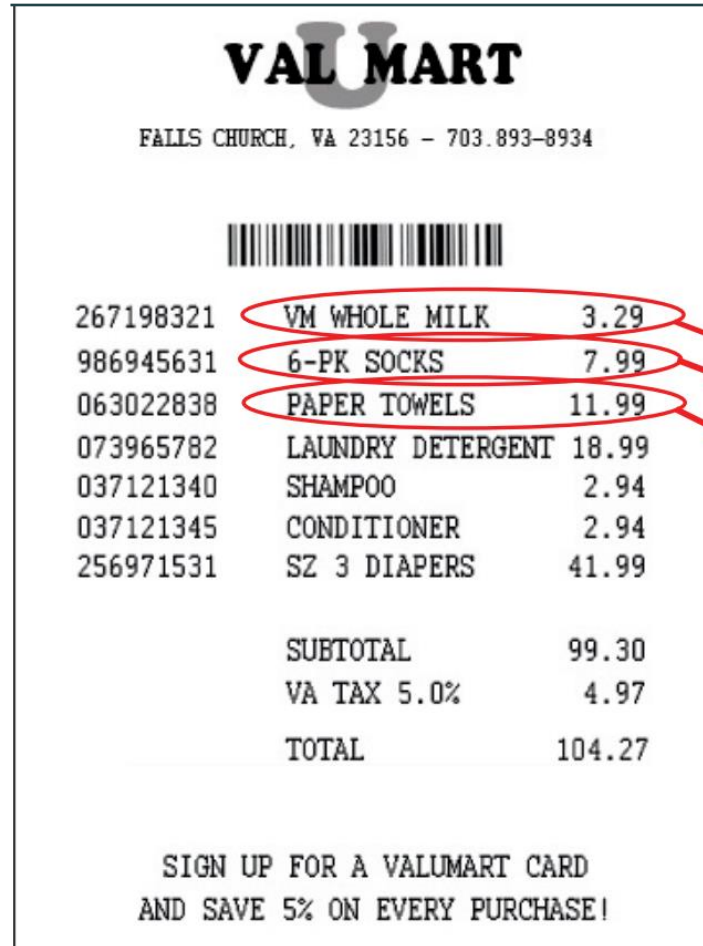


Total Expenditure Amounts



Adherence to Itemization Instructions

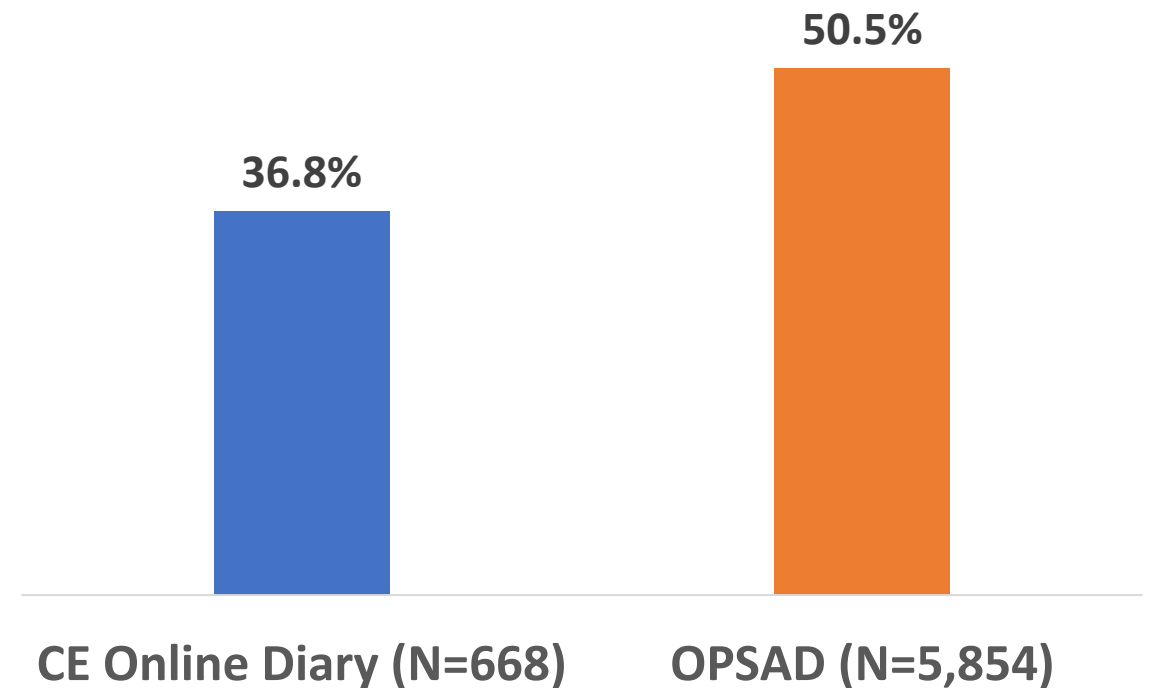
- For all expense categories except Meals Away from Home, respondents are instructed to itemize – enter each item purchased as a separate entry



Expenditure Entry Bundling

- Bundling: respondents enter “groceries” or “food” and do not itemize expenses
- Higher rates of bundling expenses in OPSAD

Estimated % of Diaries with Any Bundled Expenses



Drop-Off in Entry Counts

- Respondents may experience fatigue from the reporting process and report fewer expenditure entries over the diary period
- Drop-off measure: Averaged percentage of each household's two-week entries reported in Week 1
- Calculated for households having at least one expenditure in both weeks

	CE Online Diary (n=320)	OPSAD (n=2,701)
Week 1 mean entries	25.7	15.0
Week 2 mean entries	23.5	13.1
Mean entries (Weeks 1 + 2)	49.1	28.0
Avg. % of two-week entries reported in Week 1	52.7%	54.4%

Summary

- Data quality implications of OPSAD test design
 - ▶ Lower entry counts in OPSAD
 - ▶ Higher rates of bundling expenses in OPSAD
 - ▶ Lower average expenditure totals in OPSAD
 - ▶ Higher rates of item nonresponse in cost and item description fields in OPSAD
 - ▶ Similar drop-off in entries across weeks (among households with entries in both weeks)
- Role of interviewer and respondent communications in emphasizing instructions for diary reporting

Next Steps for Research

- Further investigate relationships between data quality measures
- Paradata analysis – How do user device type, time spent, and number of logins relate to data quality measures?
- Comparisons to full CE production sample
- Improvements to the CE online diary instrument and protocols
- Is this a platform that we could leverage for future use?



Contact Information

Nikki L. Graf

Branch of Research and Program Development
Division of Consumer Expenditure Surveys

Graf.Nikki@bls.gov

